

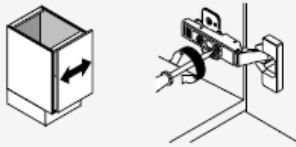
# Hinge and Drawer Adjustments

## Hinge Adjustment

### Three-dimensional adjustment

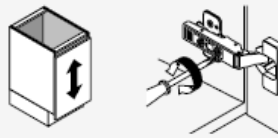
#### Side adjustment

Turn front screw to increase or decrease door overlay (+/-2mm).



#### Height adjustment

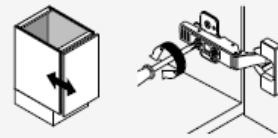
Rotate cam Screw-on mounting plate to adjust door position (+/-2mm).



On non-cam mounting plates, loosen screw, adjust door and retighten screws.

#### Depth adjustment

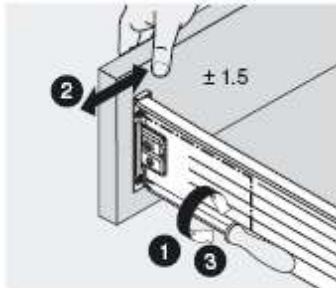
Turn rear spiral-tech cam screw to adjust door position (+3mm, -2mm).



For CLIP, loosen rear screw, adjust and retighten.

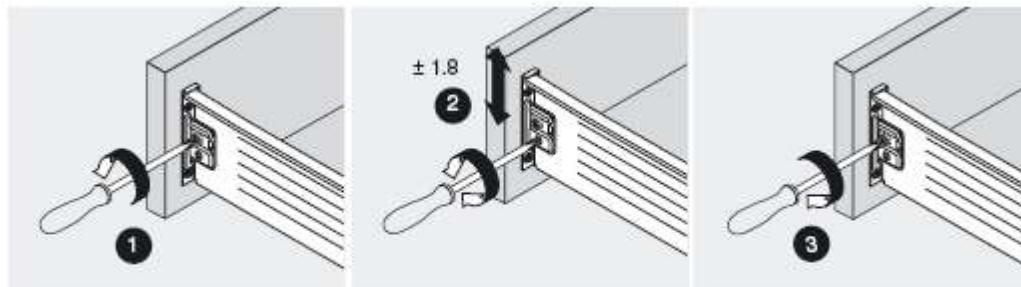
## Drawer Adjustment for standard drawer boxes

### Side Adjustment



ZSF.1700/1800

### Height Adjustment



ZSF.1700/1800